

Pressemitteilung

Leibniz-Institut für Naturstoff-Forschung und Infektionsbiologie - Hans-Knöll-Institut (Leibniz-HKI)

Friederike Gawlik

28.08.2024

<http://idw-online.de/de/news838759>

Forschungsergebnisse, Wissenschaftliche Publikationen
Biologie, Ernährung / Gesundheit / Pflege, Medizin
überregional



Common salt activates anti-tumor cells

Christina Zielinski and her team find evidence that sodium chloride can increase the activity of certain immune cells against cancer. Salt could help to boost the immune defense against cancer. This is suggested by the research findings of a team led by Prof. Dr. Christina Zielinski, who holds the Chair of Infection Immunology at the Friedrich Schiller University in Jena. The group presents its findings in "Nature Immunology".

Sodium chloride, commonly known as "table salt", was a valuable commodity in history. Today, table salt is cheap and indispensable in the kitchen. It is therefore not surprising that it has long since found its way into our everyday language – although not all expressions always bode well. However, the phrase "rubbing salt into the wound" could soon be given a positive twist, namely in cancer therapy.

In the past, cancer was usually a death sentence, but research has made considerable progress in recent decades and has significantly increased the survival time with a high quality of life for many types of cancer. Recently, adoptive T-cell therapy in particular has developed into an effective treatment tool. Here, certain of the body's own white blood cells, the T cells, are modified in such a way that they can specifically recognize and fight tumor cells. The effectiveness of this method is influenced by the metabolic activity of the T cells, which is usually suppressed in the immunosuppressive environment of a tumor. It is therefore important to identify factors that overcome this suppression.

The team led by Christina Zielinski from the Leibniz Institute for Natural Product Research and Infection Biology – Hans Knöll Institute (Leibniz-HKI) in Jena has now discovered one of these factors: Sodium ions – a component of sodium chloride – increase the efficiency of antitumoral T cells. The researchers were able to show that breast cancer tumors have a higher sodium concentration than healthy tissue and that T cells act particularly strongly against tumors when the immediate environment has a higher sodium concentration. These patients then even have a longer survival time.

"We were able to show that sodium enhances the immune response of CD8+ T cells," says Chang-Feng Chu, who is a first author of the study. CD8+ T cells are immune cells that can recognize and kill tumor cells or cells infected with viruses in the body. "Previous research has already shown that sodium regulates other types of T cells involved in autoimmune diseases and allergies. We wanted to find out what effect sodium has specifically on the activity of human CD8+ T cells," explains Shan Sun, another first author.

The researchers therefore used various technologies to investigate the effect of sodium ions on gene regulation and the metabolic process of CD8+ T cells. "We pre-treated the human T cells with salt and then cultured them with tumors. We also carried out mouse experiments with T cells," Chu explains the key experiment.

Immune cells become fitter

The researchers found that the salt improved the metabolic fitness of the CD8+ T cells by increasing the uptake of sugar and amino acids and thus energy production in the cells. As a result, the immune cells were better able to eliminate tumor cells, as the experiments on cell cultures and mice have shown. "Pancreatic tumors shrank in the mice after we injected them with T cells pre-treated with salt," says Chu.

But how exactly does sodium work in the cell? "Sodium ions increase the activity of the sodium-potassium pump on the cell membrane of T cells. This leads to a change in the membrane potential, which in turn increases the activation of the T-cell receptor," reports Sun. "This signal amplification makes it easier for the immune cells to kill tumor cells more efficiently." Her colleague Chu adds: "The salt also protects the T cells from becoming exhausted too quickly. This is important because exhausted T cells gradually lose their ability to fight cancer cells."

The research team recommends using sodium chloride as a positive regulator for the "killer" function of T cells in future. Of course, this is not about patients consuming more salt in their diet. Rather, it is conceivable that the immune cells are exposed to an increased salt concentration outside the body and become highly active against tumor cells after being administered to the patients. Ordinary table salt could therefore support adoptively transferred T cells in the fight against cancer and possibly also against infectious diseases that require a defense against infected cells. So, the expression "rubbing salt into someone's wound" does not necessarily remain a negative one.

Participating institutions

Leibniz Institute for Natural Product Research and Infection Biology – Hans Knöll Institute, Jena, Germany
Friedrich Schiller University Jena, Germany
Jena University Hospital, Germany
Leibniz Institute on Aging – Fritz Lipmann Institute, Jena, Germany
Technical University of Munich, Germany
University of Freiburg, Germany
University Medical Center Freiburg, Germany
Philipps University Marburg, Germany
Technical University of Braunschweig, Germany
Helmholtz Center Munich, Neuherberg, Germany
University Hospital Erlangen, Germany
Friedrich Alexander University Erlangen-Nuremberg, Germany
University Hospital Würzburg, Germany
Medical University of Vienna, Austria

Funding

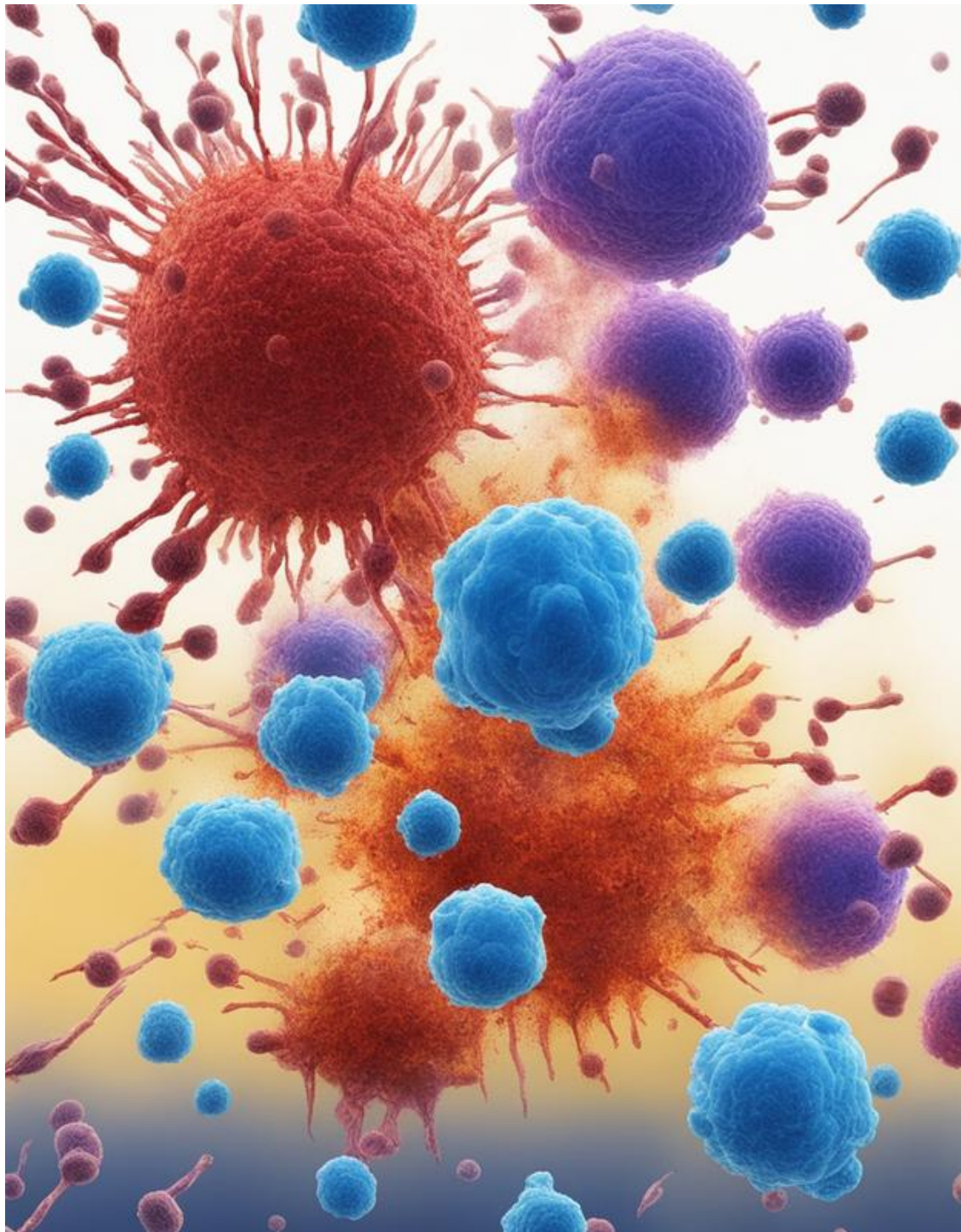
German Research Foundation
Cluster of Excellence "Balance of the Microverse"
German Federal Ministry of Education and Research
Leibniz Center for Photonics in Infection Research
Carl Zeiss Foundation

wissenschaftliche Ansprechpartner:

Prof. Dr. Christina Zielinski
Infection Immunology, Leibniz-HKI, Jena, Germany
Head
+49 3641 532-1251
christina.zielinski@leibniz-hki.de

Originalpublikation:

Soll D, Chu CF, Sun S, Lutz V, Arunkumar M, Gachechiladze M, Schäuble S, Alissa-Alkhalaf M, Nguyen T, Khalil MA, Garcia-Ribelles I, Mueller M, Buder K, Michalke B, Panagiotou G, Ziegler-Martin K, Benz P, Schatzlmaier P, Hiller K, Stockinger H, Luu M, Schober K, Moosmann C, Schamel WW, Huber M, Zielinski CE (2024) Sodium chloride in the tumor microenvironment enhances T-cell metabolic fitness and cytotoxicity. *Nature Immunology*, <https://doi.org/10.1038/s41590-024-01918-6>



Immune cells (purple and blue) attack tumor cells (red). Highly active CD8⁺ T cells treated with sodium chloride are shown in purple. In contrast to untreated cells (blue), they exhibit increased cytotoxicity and significantly damage tumor cells.

Chang-Feng Chu/Leibniz-HKI



In adoptive T-cell therapy, the patient's own immune cells (T cells) are isolated from the blood and modified and multiplied in the laboratory in a therapy-specific manner. They are then reinfused into the patient and destroy tumor cells.

Anna Schroll

Anna Schroll/Leibniz-HKI